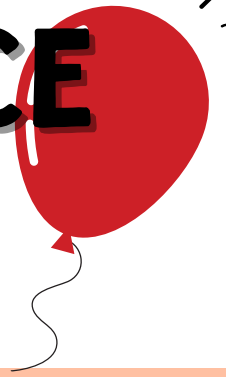


SUPER SEDER SCIENCE

LIFT OFF



QUESTION: WHAT HAPPENS TO THE TISSUE PAPER WHEN YOU PUT THE BALLOON OVER IT?

- MATERIALS
- BALLOON
- TISSUE PAPER
- _____

DIRECTIONS:

- 1) BLOW UP BALLOON
- 2) RIP A SMALL SQUARE OF TISSUE PAPER.
- 3) RUB BALLOON ON YOUR HAIR.
- 4) PUT BALLOON NEAR THE TISSUE.

USE YOUR SCIENTIFIC METHOD SHEET TO RECORD YOUR OBSERVATIONS.

WHAT'S HAPPENING?

WE ARE MADE OF ATOMS. ATOMS CAN HAVE A POSTIVE, NEGATIVE, OR NEUTRAL CHARGE. WHEN YOU RUB THE BALLOON, NEGATIVE ELECTRONS ARE ADDED TO IT. THE TISSUE IS POSITIVELY CHARGED WHICH MAKES THEM ATTRACTED TO EACHOTHER SO THE TISSUE IS DRAWN TO THE BALLOON.



TRY IT: WILL THE BALLOON ATTRACT A WATER STREAM FROM THE FAUCET?