

FRANKENSTEIN'S MATZAH

SUPER SEDER SCIENCE

MATZAH GLUE EXPERIMENT



QUESTION: CAN WE MAKE GLUE FROM MATZAH?

USE YOUR SCIENTIFIC METHOD SHEET TO RECORD YOUR OBSERVATIONS.

MATERIALS

- 2-3 PIECES MATZAH
- 1/4 C. WATER (OR MORE)
- 1 BOWL
- 1 SPOON
- 2 PIECES PAPER

DIRECTIONS

1. CRUSH MATZAH INTO FINE CRUMBS IN THE BOWL SIFT THE BIGGER PIECES OUT.
2. ADD WATER A LITTLE AT A TIME AND MIX UNTIL YOU HAVE A THICK PASTE.
3. SPREAD THE PASTE ON ONE PIECE OF PAPER.
4. PRESS THE SECOND PIECE OF PAPER ON TOP.
5. WAIT 30 MINUTES FOR IT TO DRY.
6. TRY TO PULL THE PAPERS APART!

WHAT'S HAPPENING?

MATZAH IS MADE FROM FLOUR AND WATER. WHEN YOU ADD WATER TO CRUSHED MATZAH, THE FLOUR PROTEINS (CALLED GLUTEN) BECOME STICKY AND ACT LIKE GLUE. AS THE PASTE DRIES, THE PROTEINS LOCK TOGETHER AND BOND THE PAPERS.

ANCIENT EGYPTIANS USED SIMILAR FLOUR PASTE TO GLUE PAPYRUS SHEETS FOR WRITING - THE SAME TIME PERIOD AS THE PASSOVER STORY!

TRY IT AGAIN:

DOES MORE WATER MAKE WEAKER GLUE? CAN YOU BUILD AND GLUE A PYRAMID FROM YOUR MATZAH BOX?



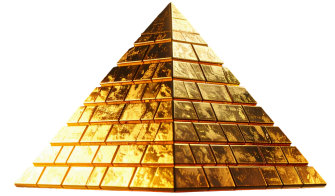
GLUTEN BONDS

FrankensteinsMatzah.com

FRANKENSTEIN'S MATZAH

SUPER SEDER SCIENCE

MATZAH GLUE



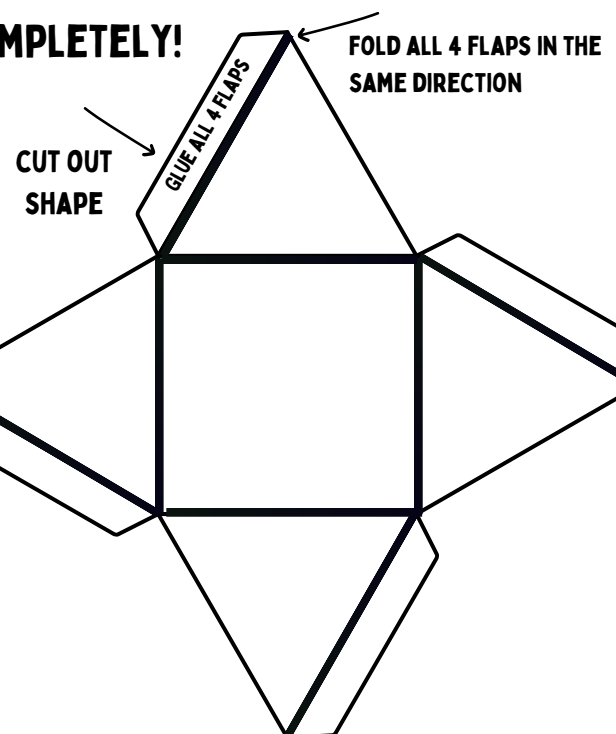
EGYPTIAN PYRAMID TEMPLATE

MATERIALS

- MATZAH CARDBOARD BOX
- PENCIL/MARKER
- SCISSOR
- _____

DIRECTIONS

1. CAREFULLY OPEN THE MATZAH BOX SO IT LIES FLAT.
2. TRACE THE TEMPLATE ONTO YOUR MATZAH CARDBOARD (OR JUST USE THE PAPER TEMPLATE)
3. CUT ALONG THE OUTSIDE
4. FOLD ALONG THE THICK LINES
5. APPLY MATZAH GLUE TO THE TABS
6. PRESS TABS DOWN AND HOLD FOR 1-2 MINUTES
7. LET DRY COMPLETELY!

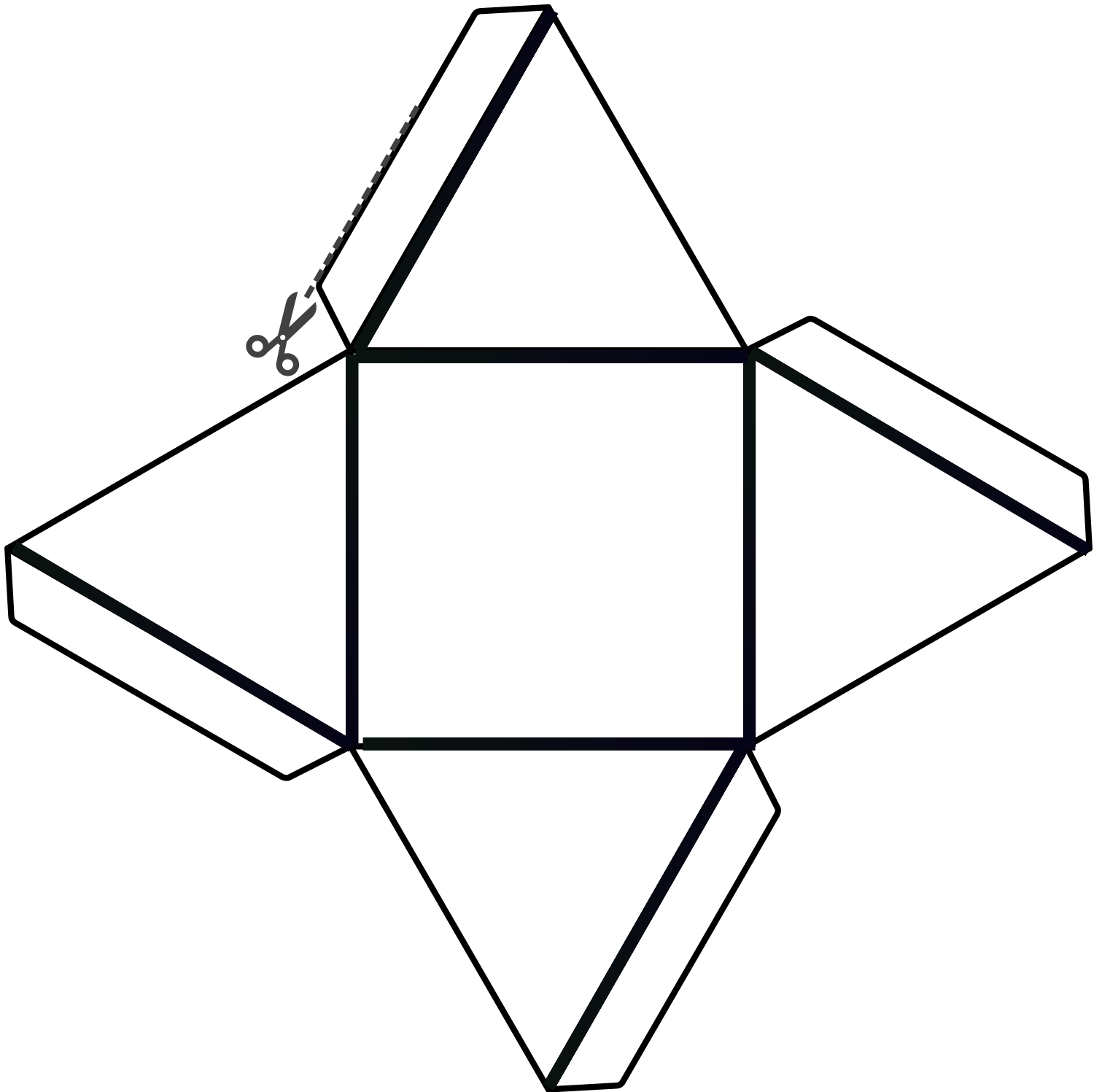


FRANKENSTEIN'S MATZAH

SUPER SEDER SCIENCE

EGYPTIAN PYRAMID TEMPLATE

CUT ALONG THE OUTSIDE AND FOLD ON THE THICK LINES



GLUTEN BONDS

FrankensteinsMatzah.com